

Digital Rectal Examination Simulator

Product No. **M92**

Digital Rectal Examination Simulator is a unique trainer designed for training in differentiation of rectal diseases by palpation. Four interchangeable rectum units are included. Trainee can also palpate normal prostate or endocervix. Life-like rectum is palpable up to seven cm depth.

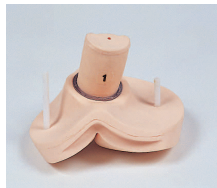
High-fidelity sphincter resistance and feeling of rectum wall allows excellent hands-on DRE training before passing on to patients.



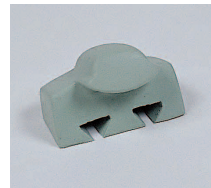
4 interchangeable rectum units for differentiation of lesion types.



Prostate or endocervix can be palpated.



Rectum unit



Prostate unit

Set includes:

- 1 lumbar torso (unisex)
- 4 rectum units:
 - 1 normal,
 - 2 rectal cancers,
 - 1 rectum with polyps
- 1 prostate unit
- 1 endocervix unit
- 1 jar of Vaseline
- 1 carrying case

manikin size: 30 x 35 x 29H cm, 6.2 kg
packing size: 44 x 53 x 53H cm, 13 kg

Replacement parts

- 11269-110 rectum unit #1 (normal)
- 11269-120 rectum unit #2 (cancer A)
- 11269-130 rectum unit #3 (cancer B)
- 11269-140 rectum unit #4 (rectum with polyps)
- 11269-150 prostate unit
- 11269-160 endocervix unit

Specifications are subject to change.

 **KYOTO KAGAKU**

www.kyotokagaku.com rw-kyoto@kyotokagaku.co.jp

Head Office: 15 Kitanechoya-cho, Fushimi-ku, Kyoto, 612-8388, JAPAN Tel: +81-75-605-2510 Fax: +81-75-605-2519
USA Office: 3109 Lomita Boulevard, Torrance, CA 90505-5108, USA Tel: 1-310-325-8860 Fax: 1-310-325-8867